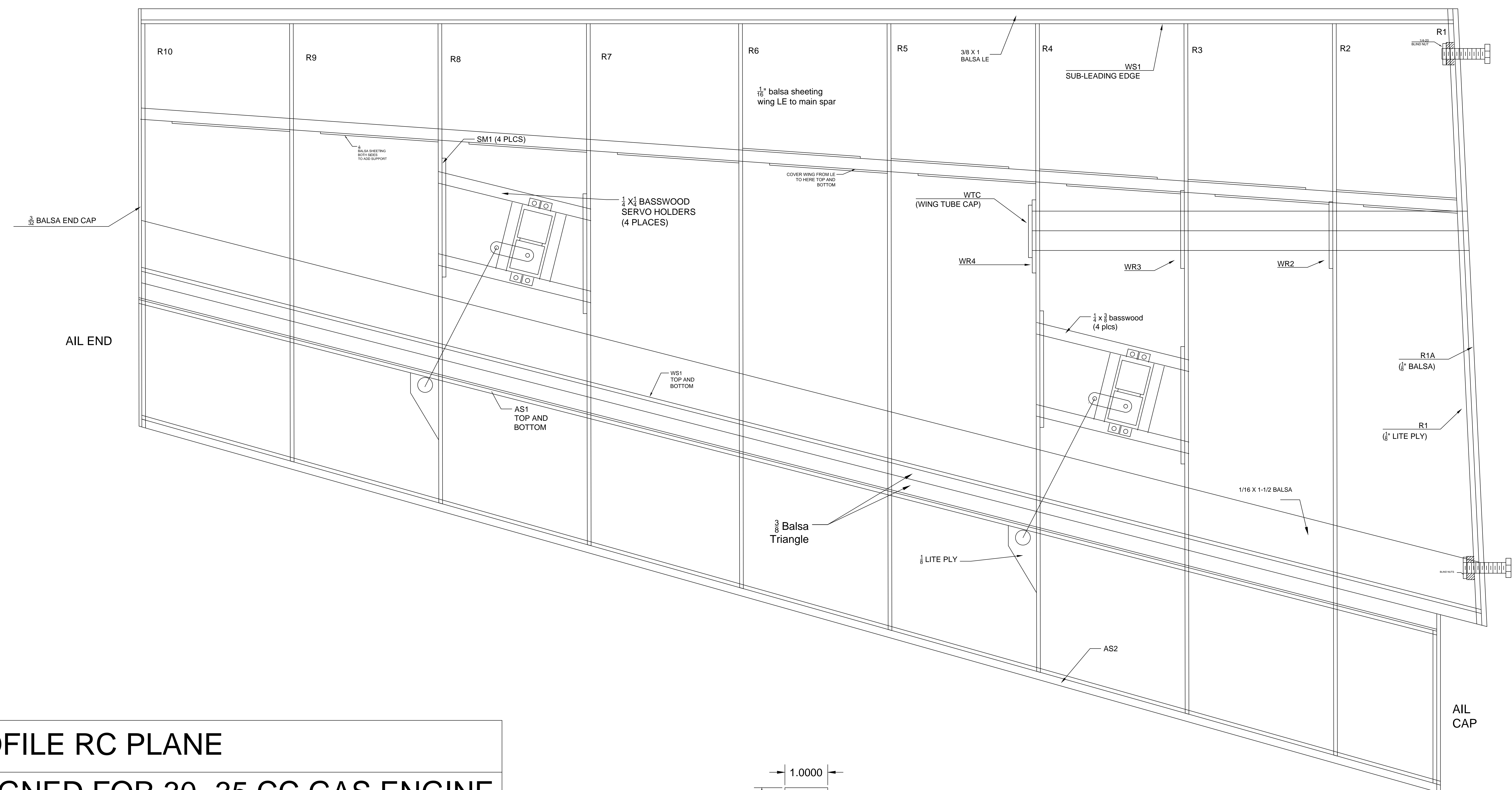


PLEASE NOTE ONE WING IS TO BE BUILT UPSIDE DOWN.
 MAKE SURE TO BUILD A RIGHT AND LEFT WING



PROFILE RC PLANE
DESIGNED FOR 30- 35 CC GAS ENGINE
WS 65-3/8" LENGTH 56"
SHEET 3 OF 4 LEFT WING

